

COMPOSITE BAMBOO ACCESS MAT

CP22AMB004

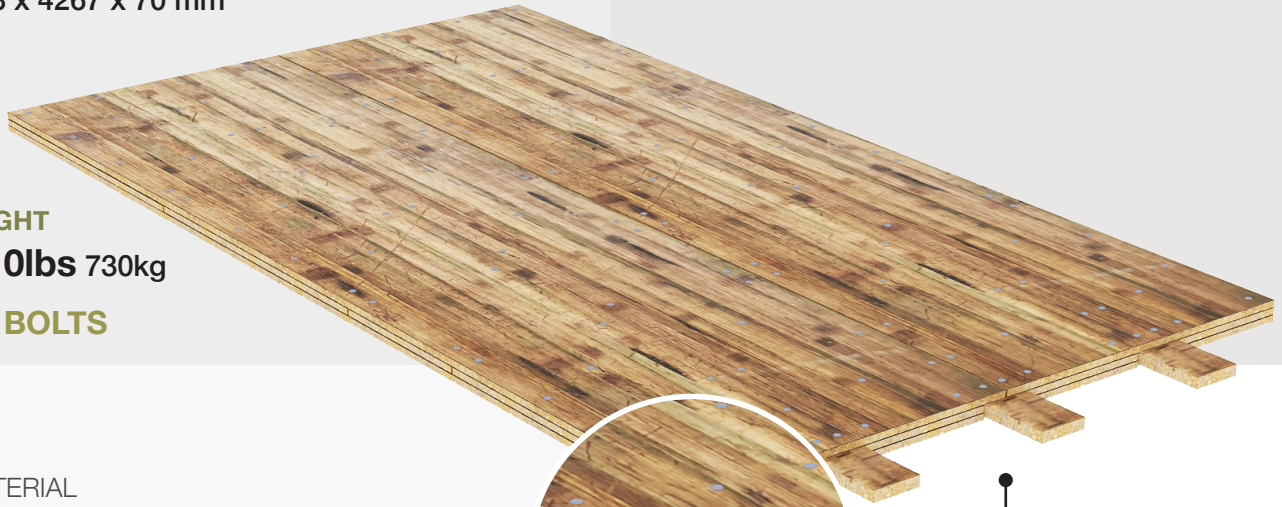
DIMENSIONS

8' x 14' x 2 3/4"
2438 x 4267 x 70 mm

WEIGHT

1610lbs 730kg

124 BOLTS



MATERIAL

Laminated Veneer Bamboo

BAMBOO FEATURES

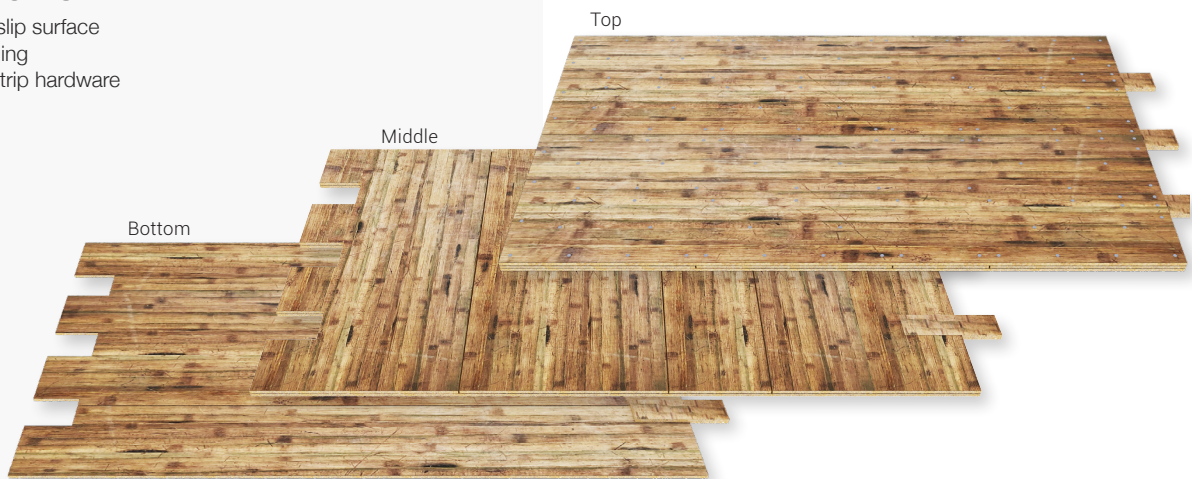
Naturally repels moisture
Renewable resource
More impervious to rot, fungus and insects

MAT FEATURES

Rough non-slip surface
Beveled edging
Flush-fit, no trip hardware

INTERLOCKING SYSTEM

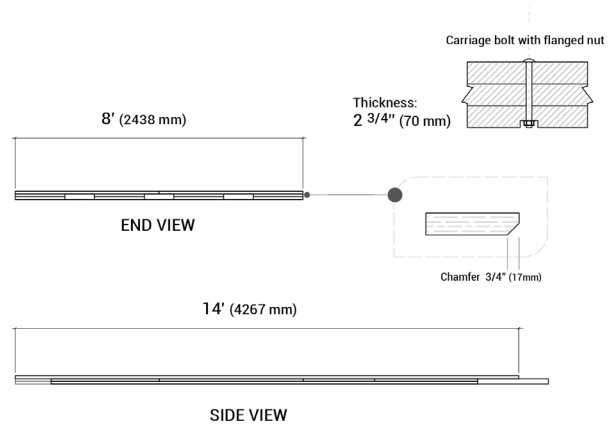
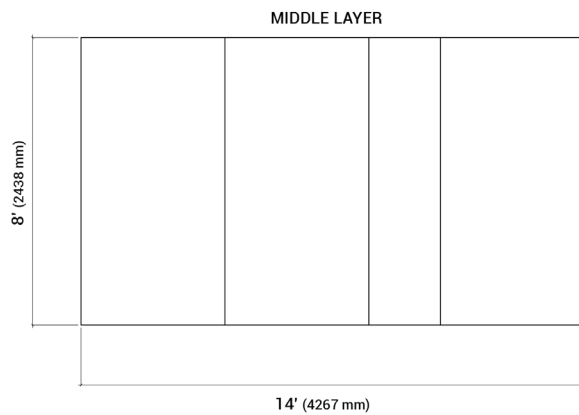
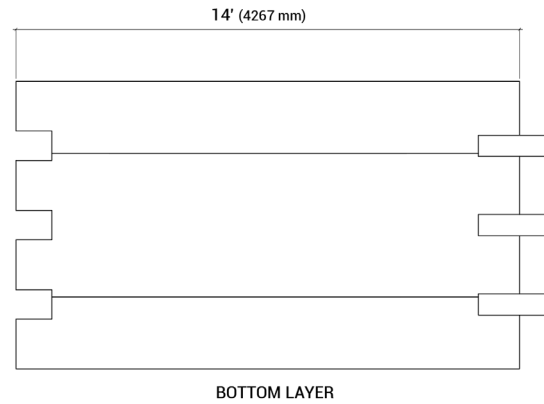
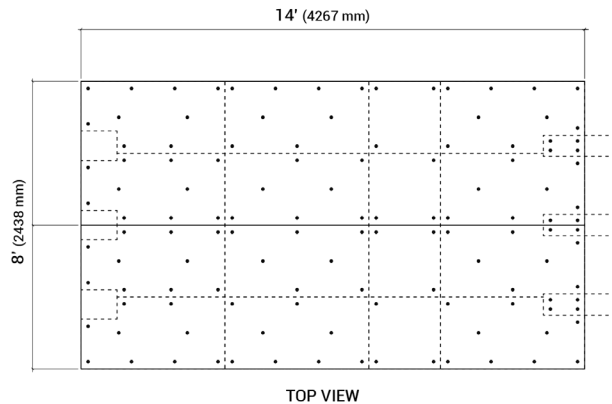
Three finger locking system joins mats seamlessly



IMPERVIOUS TO ROT, FUNGUS, AND INSECTS BAMBOO GROWS 10X FASTER THAN WOOD 30-40% LIGHTER THAN OAK LESS THAN 5% MOISTURE ABSORPTION LESS PRONE TO SHRINKING OR WARPING THREE LAYER DESIGN

COMPOSITE BAMBOO ACCESS MAT

CP22AMB004



DIMENSIONS

8' x 14' x 2 3/4"
2438 x 4267 x 70 mm

WEIGHT

1610lbs 730kg
124 BOLTS



IMPERIOUS TO
ROT, FUNGUS,
AND INSECTS



BAMBOO GROWS
10X FASTER
THAN WOOD



30-40% LIGHTER
THAN OAK



LESS THAN
5% MOISTURE
ABSORPTION



LESS PRONE TO
SHRINKING OR
WARPING



THREE LAYER
DESIGN