

# HYBRID ACCESS MAT CP23AMHB02

## DIMENSIONS

**8' x 14' x 4 1/2"**  
2438 x 4267 x 114 mm

## WEIGHT

**1576lbs** 715kg

## 173 BOLTS



MIDDLE LAYER



**INTERLOCKING SYSTEM**  
Three finger locking system joins mats seamlessly

**MATERIAL**  
Mixed Hardwood  
Laminated Veneer Bamboo



BOTTOM VIEW

## BAMBOO FEATURES

Naturally repels moisture  
Renewable resource  
More impervious to rot, fungus and insects



IMPERVIOUS TO ROT, FUNGUS, AND INSECTS

BAMBOO GROWS 10X FASTER THAN WOOD

30-40% LIGHTER THAN OAK

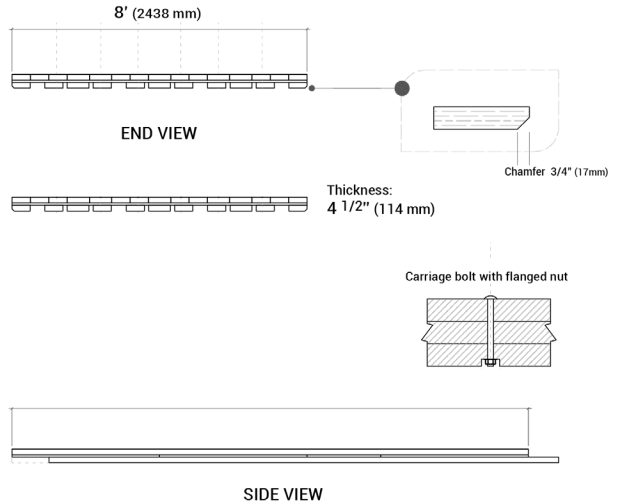
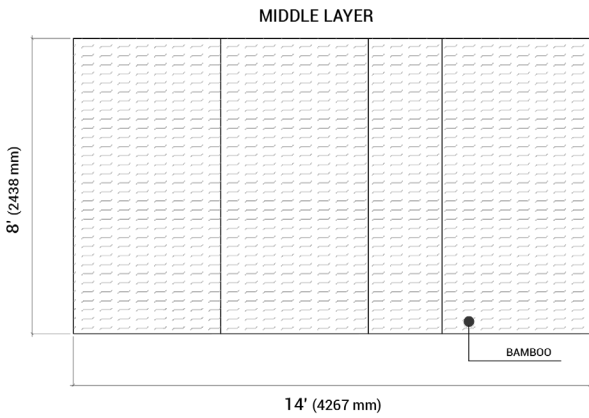
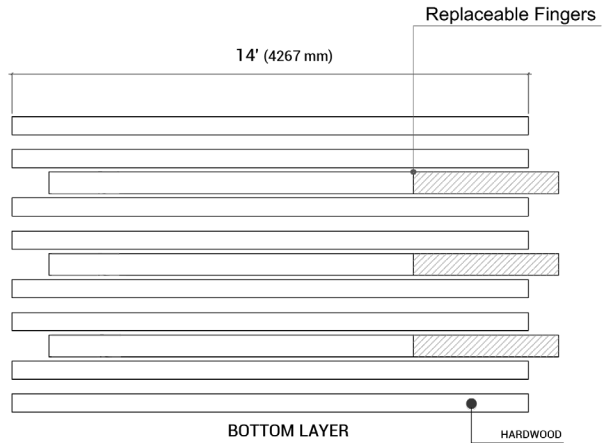
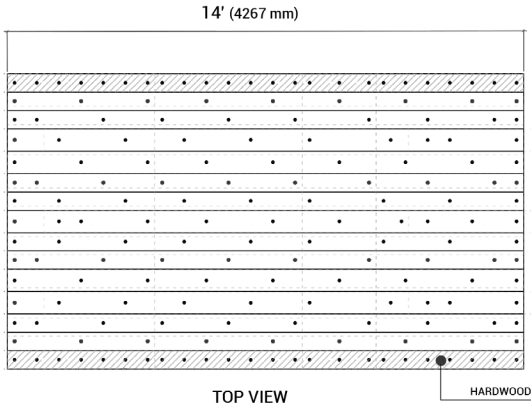
LESS THAN 5% MOISTURE ABSORPTION

LESS PRONE TO SHRINKING OR WARPING

THREE LAYER DESIGN

# HYBRID ACCESS MAT

## CP23AMHB02



### DIMENSIONS

**8' x 14' x 4 1/2"**  
2438 x 4267 x 114 mm

### WEIGHT

**1576lbs 715kg**  
**173 BOLTS**



IMPERVIOUS TO  
ROT, FUNGUS,  
AND INSECTS



BAMBOO GROWS  
10X FASTER  
THAN WOOD



30-40% LIGHTER  
THAN OAK



LESS THAN  
5% MOISTURE  
ABSORPTION



LESS PRONE TO  
SHRINKING OR  
WARPING



THREE LAYER  
DESIGN